



DAIKO

# REFLECTOR COMPASS

反射式磁気コンパス

**SR-150PK**  
**SR-150PKK (H.K.)**  
**SR-165PS**  
**SR-165PSK (H.K.)**



Reflector Compass Type SR-150PK SR-150PKK(H.K.) SR-165PS SR-165PSK(H.K.) is installed upon the flying bridge deck and can be seen in the wheelhouse for both standard compass and steering purposes.

The binnacle has an optical equipment by which the graduation of the card can be reflected on the lower part of the inner pipe. This avoids the bad effect due to other magnetic substances also saves the space in the steering room.

By increasing the magnification on the reflected graduation using the built-in room lens, reflector compass surpass the conventional compass.

Card graduation 000° ~ 360°

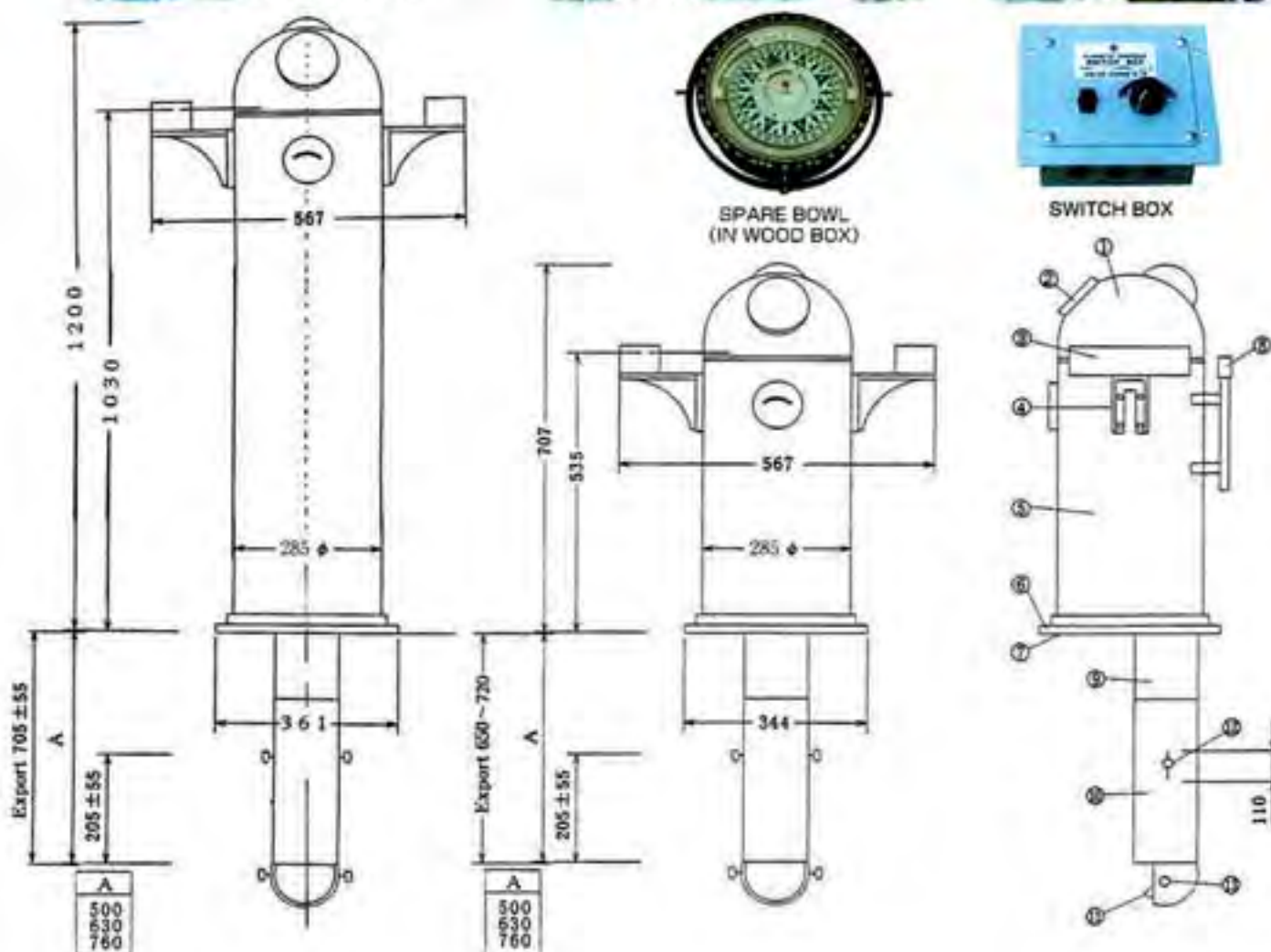
### Accessories

- CORRECTOR PLATE 1 set
- FLINDERS BAR 1 set
- SHADOW PINS 1 set
- PACKING 1 set
- SWITCH BOX 1 set

### Spare Parts

- MIRROR
- LAMP(DC24V/10W)2
- CLEANING CLOTH 1
- ANTI-CLOUD OIL 1

Option :  
AZIMUTH CIRCLE



- ① HELMET
- ② PEEP WINDOW
- ③ CORRECTOR BOX
- ④ BRACKET
- ⑤ BINNACLE
- ⑥ BASE FLANGE
- ⑦ PACKING
- ⑧ FLINDERS BER CASE
- ⑨ INNER PIPE
- ⑩ OUTER PIPE
- ⑪ MIRROR
- ⑫ FINGER SCREWS
- ⑬ FINGER SCREWS

Specifications subject to change without notice.

DAIKO KEIKI SEISAKUSYO CO., LTD.